

EMERALD POINTE PLAT NO. 2

A PART OF A PLANNED UNIT DEVELOPMENT
 LYING IN SECTION 16, TOWNSHIP 46 SOUTH, RANGE 42 EAST
 PALM BEACH COUNTY, FLORIDA.
 SHEET 3 OF 8 FEBRUARY, 1990.

HAGEN RANCH HEIGHTS
 (PLAT BOOK 50, PAGES 125 & 126)

P.O.C. 0440-002
 NE CORNER NW 1/4
 SEC. 16, TWP 46S, RGE. 42 E

50

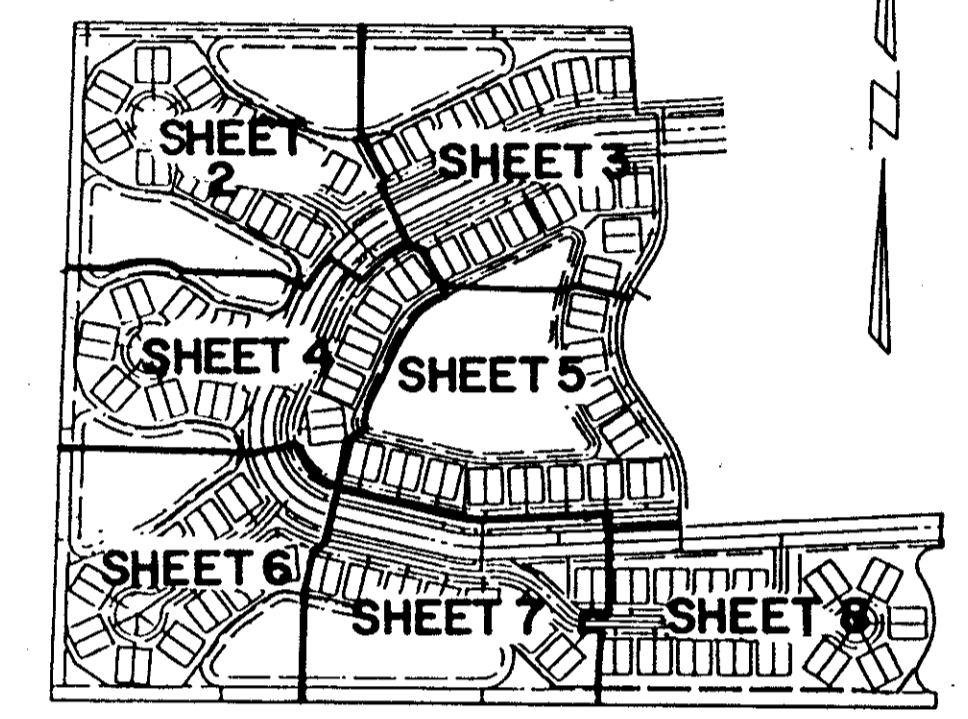
STATE OF FLORIDA
 COUNTY OF PALM BEACH
 This Plat was filed for record at _____
 M. this _____ day of _____, 19____
 and duly recorded in Plat Book No. _____
 on Page _____
 John B. Dunkle, Clerk of the Circuit Court
 By _____ D.C.

MATCH TO SHEET 2

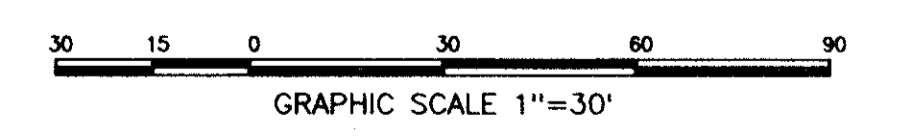
MATCH TO SHEET 2

MATCH TO SHEET 4

MATCH TO SHEET 5



KEY MAP



0440-002
 65/50

Landmark Surveying & Mapping Inc.
 1850 FOREST HILL BOULEVARD
 PH. (407)433-5405 SUITE 100 W.P.B. FLORIDA

EMERALD POINTE PLAT NO. 2

SUBDIVISION * EMERALD POINTE PLAT NO. 2
 BOOK 65 PAGES 50
 PLAT MAP # 266A
 84-119

Pct. 84-119

AD. BY
 C.R. BY